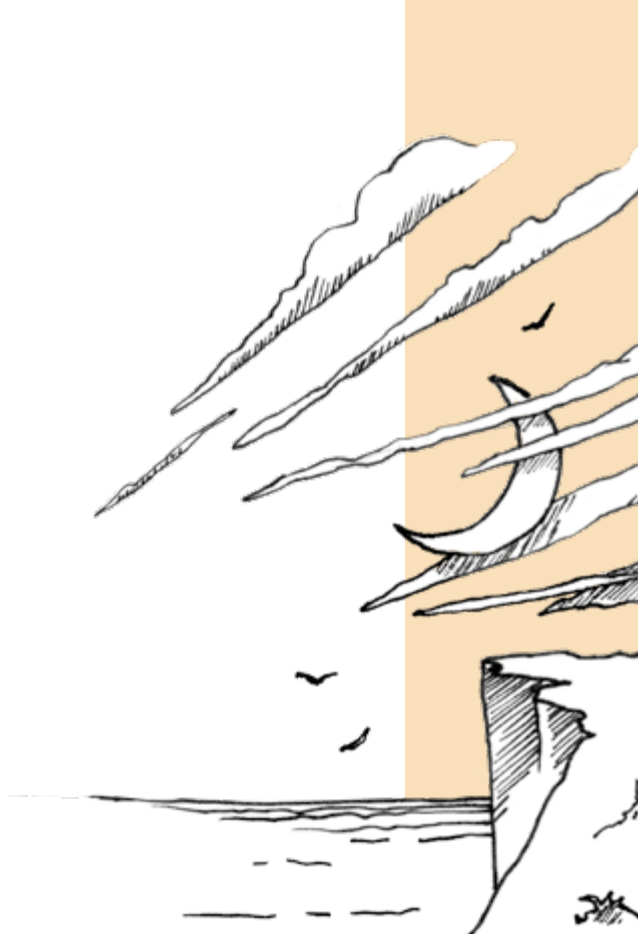


RÊVE D'ÉTÉ

PREMIUM two-bedroom model
4/6 people - 40 m²

More than just a name, our summer dream model is a promise that this high-end home will have no trouble keeping. With its generous proportions, superior level of comfort and multiple doors opening outside, you'll be whisked away into the heart of summer as if in a daydream.



WHAT WE LOVE

- The layout and panoramic view
- The large living area with corner sofa and modular lounge chair
- Large walk-in wardrobe
- The reinforced insulation and convector heaters in each room



OVERALL DIMENSIONS: L 10.80 X W 4.20 M/SURFACE AREA: 40 M²



All IRM Habitat models are EN 1647 certified, an EU regulation which involves more than 180 safety and comfort checks.

Fittings included

<p>PANORAMIC LIVING ROOM</p> <ul style="list-style-type: none"> • Corner sofa bed with arm rest, under-seat storage, built-in sofa bed 140 x 190 cm and movable easy chair. • Low, round table with storage. • Plug socket and 2 USB ports. • TV area including TV wall mount and a suspended storage unit with sliding door and shelves. • Smart 1000 W convector heater. 	<p>BRIGHT LIVING AREA</p> <ul style="list-style-type: none"> • Ergonomic table 80 x 80 cm which extends to 160 x 80 cm. • 4 chairs with wooden frame and soft white polyvinyl seat. • Large storage unit and mirror at entrance level. • Hydropower water heater inside a unit in the entrance and brush holders. <p>HALLWAY</p> <ul style="list-style-type: none"> • Smart 500 W convector heater. • Large horizontal mirror. 	<p>WELL-EQUIPPED KITCHEN</p> <ul style="list-style-type: none"> • 4 Burner stainless steel gas hob with white glass splashback cooker protector. • Built-in stainless steel extractor fan. • Electric oven. • Fridge-freezer/microwave unit. • Combined 2-door fridge-freezer 194 L (143 L + 51 L), stainless steel colour. • Pre-fitted dishwasher. • White resin sink with modern mixer tap. • Multiple storage units: pots and pans drawer, lower and upper cupboards, 2 spice racks, glass rack. • Canvas window roller blind.
<p>MAIN BEDROOM</p> <ul style="list-style-type: none"> • Bed 140 x 190 cm, high resilience, hypoallergenic foam mattress 35 kg/m³, OEKO-TEX certified. • 18-slat base with full-sized footboards. • Large upholstered headboard, with reading light and plug sockets on both sides. • 2 suspended bedside cabinets. • Large walk-in wardrobe with hanging space, shelves, drawers and pre-fitted washing machine. Closed with sliding doors. • Dressing table with mirror and dedicated seat. • TV wall mount. • Roller blind. • Smart 500 W convector heater. 	<p>CHILDREN'S/GUEST BEDROOM</p> <ul style="list-style-type: none"> • Access via a sliding door. • 2 Beds 80 x 190 cm, high resilience, hypoallergenic foam mattress 35 kg/m³, OEKO-TEX certified. • Large protective headboard. • 1 free-standing bedside cabinet. • Overbed bridging unit with 2 doors and 1 open shelf. • Linen cupboard with 1 door. • Roller blind. • Smart 500 W convector heater. 	<p>LARGE, SPACIOUS BATHROOM</p> <ul style="list-style-type: none"> • Smooth XXL 80 x 100 cm low profile shower tray and high shower door. • Adjustable shower height. • Standing washbasin cabinet with mirror unit. • Tall cupboard with shelves and door. • Heated towel rail. • Window with frosted glass for maximum privacy. • Venetian blinds in bathroom and WC. • Separate WCs with brush holders.

Become IRM Habitat Ambassadors by joining the premier network of IRM mobile home owners for free and enjoy the many exclusive benefits! www.club-mobilhome.com