

O'HARA

# 1175 3-BED

Accessible model



**3 Bedrooms**

**Sleeps 6**

**50 m<sup>2</sup> surface area**

**Dimensions: 11.80x4.45 m\***

**2.30 m internal height**

**3.70 m external height**



## 50 M<sup>2</sup> FOR ALL

Unprecedented spaciousness for the all-new 1175 3-bed mobile home! O'Hara is pushing boundaries with a 50m<sup>2</sup> XXL layout designed to accommodate people with reduced mobility.

XXL shower room

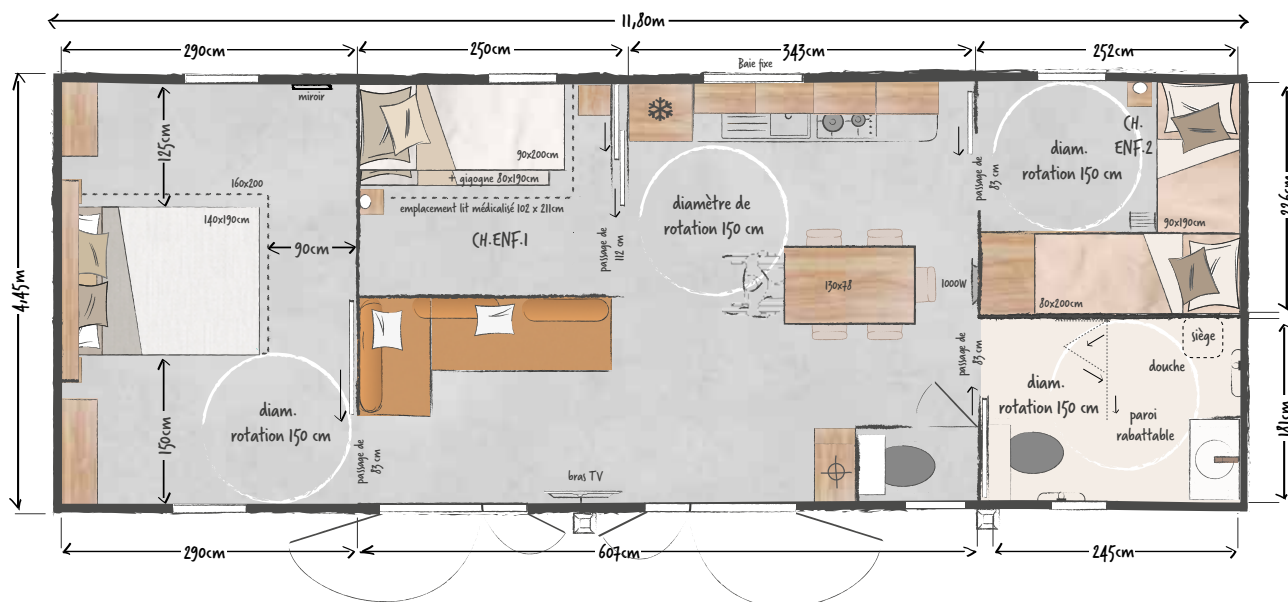
XXL turning areas

XXL 83 cm openings

XXL master suite

Made-to-measure XXL comfort

\* Overall dimensions and floor area inside walls.



BIO HABITAT

Accessible model

1175

3-bed



- Full-width hotel blackout curtains
- Headboard with reading lights and integrated sockets
- Bedside tables
- 140x190 cm bed base, 18 slats, with raised feet for easy transfers
- Large cupboard on either side of the bed
- Mirror

### CHILDREN'S BEDROOM 1

- Fabric roller blind
- Storage column
- 90x200 cm bed, 18 slats with 80x180 cm trundle bed
- Reading light
- Bedside table
- Space for 102 x 211 cm care bed

### CHILDREN'S BEDROOM 2

- Fabric roller blind
- 90x190 cm bottom bed with raised legs for easy transfers, reading light, socket and bedside table
- 80x200 cm top bed accessible via a ladder
- Top bed lit using ceiling spotlights controlled by a toggle switch
- Linen cupboard under the top bed

### XXL BATHROOM

- Walk-in shower with full ABS floor
- Freestanding basin and mixer tap with extended knob topped with an XXL mirror
- Surface-mounted light fitting
- Shower with folding seat
- Folding glass wall
- His & Hers shower column
- Thermostatic mixer
- 4 handrails in the shower and toilet areas
- Wall-mounted toilets at the ideal height for transfers
- Window with frosted privacy glass

### STANDARD EQUIPMENT

- Round metallic gutter and downspout kit
- 1000 W convection heater
- TV cabling
- Top and bottom ventilation
- Hydropower boiler coupled with a 15L electric water heater
- Main circuit breaker
- HR35 kg/m<sup>3</sup> foam mattress, OEKO TEX-certified
- Smoke detector with 10-year guarantee
- Phthalate-free heavy-duty lino
- Fridge freezer
- 100% LED lighting
- Top-of-the-range ACS-certified taps with 7 l/min flow limiter (sink and basin)
- Reinforced floor (100 mm) and roof (200 mm) insulation - GR40 glass wool
- Wall-hung toilet in shower room

### KITCHEN

- Large-capacity high and low storage units with handles
- Stainless steel sink with stylish mixer tap with extended handle
- White 4-burner gas hob
- Recessed hood
- Fridge-freezer/microwave unit
- Drawer with full-extension runners

### LIVING ROOM

- 130x78 cm rectangular table with 6 stackable in & out chairs
- Corner sofa on legs
- Power socket with USB port
- TV bracket
- Technical column housing the hydropower boiler, the small 15L electric water heater and the electrical panel

### MASTER BEDROOM

### SPECIFIC FEATURES

- XXL layout designed in partnership with the FNHPA and the Passerelles network
- Access to all adapted rooms via sliding doors with a minimum usable width of 83 cm
- 150 cm diameter turning areas
- Walk-in shower with full ABS floor
- Electrical fittings, handles and accessories in contrasting colours for easy visual identification
- Adjusted equipment and appliance heights

*Data not contractually binding. The manufacturer reserves the right to modify its products at any time without notice. Decorative items, microwaves and televisions are not supplied with mobile homes.*

Accessible to people with the four disability types:

- Physical
- Visual
- Cognitive
- Auditory (options available)