

LIVING 2-BED



Model shown with 4-sided Wild Grizzli cladding option, installed horizontally

2 Bedrooms

Sleeps 4

28 m² surface area+ 7 m² int. terrace

Dimensions: 9.45x4.45 m*

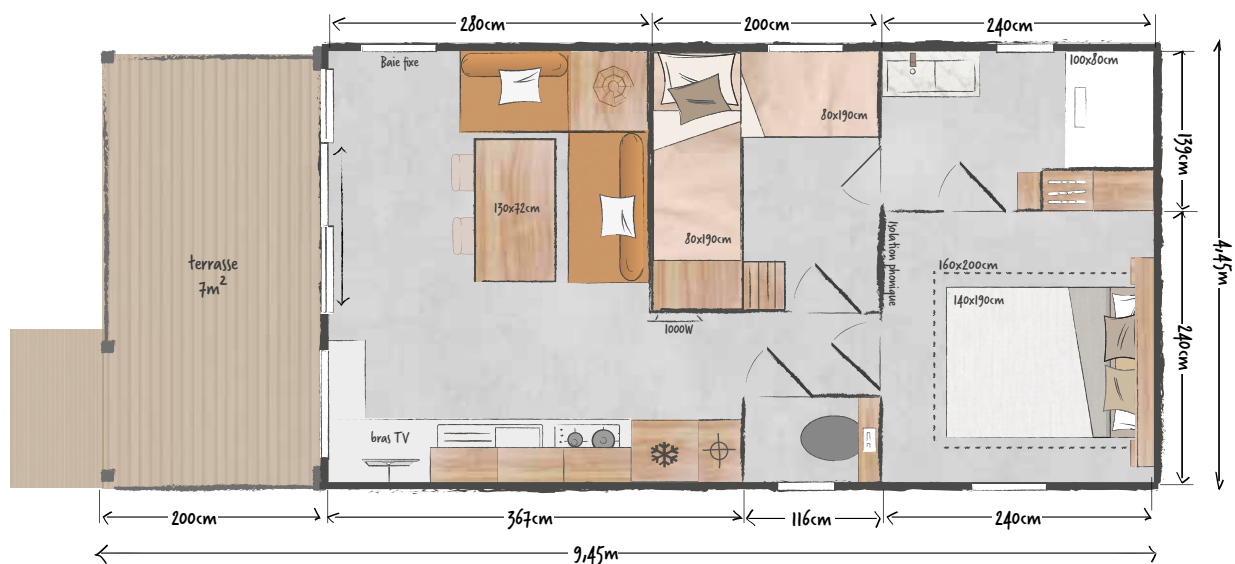
2.30 m internal height

3.59 m external height

* Overall dimensions and floor area inside walls.

WITH A VIEW!

This model features an original layout for the sleeping area, with direct access to the shower room from each bedroom. LIVING can be used as a bar area designed for sharing memorable moments together. The understated exterior design will blend elegantly into your Premium neighbourhoods with a view!



model LIVING 2-bed



STANDARD EQUIPMENT

- Round metallic gutter and downspout kit
- 1000 W convection heater
- TV cabling
- Top and bottom ventilation
- Hydropower boiler
- Main circuit breaker
- HR35 kg/m³ foam mattress, OEKO TEX-certified
- Smoke detector with 10-year guarantee
- Free-standing kitchen units with PVC skirting boards
- Phthalate-free heavy-duty lino
- Fridge freezer
- 100% LED lighting
- Top-of-the-range ACS-certified taps, C3 cartridge mixers with central cold position and 7 l/min flow limiter (sink and basin)
- Reinforced floor (100 mm) and roof (200 mm) insulation - GR40 glass wool
- Wall-mounted toilet

KITCHEN

- Indoor bar area
- Large capacity tall storage units
- Recessed hood
- Resin sink with stylish mixer tap
- White 4-burner gas hob
- Base units with wooden handles and 2 shelving units
- Drawers with full-extension runners
- Fridge-freezer/microwave unit
- Technical column housing the boiler
- TV bracket

LIVING ROOM

- 130x72 cm rectangular table with 2 stackable in & out chairs
- Corner sofa on legs with integrated coffee table
- Pendant light
- Power socket with USB port
- Venetian blind on fixed bay window
- Large mirror above the sofa



MASTER BEDROOM

- Full-width blackout curtain
- Headboard with shelves, reading lights and integrated sockets
- Bedside tables
- 140x190 cm bed base, 18 slats
- Built-in, full-height wardrobe with sliding door
- Direct access to the shower room
- Sound insulation between master bedroom and children's bedroom

MEZZANINE BEDROOM

- Fabric roller blind
- 80x190 cm bottom bed with reading light, socket and bedside table
- 80x190 cm top bed accessible via a ladder
- Mezzanine bed lit by ceiling-mounted spotlights controlled by a toggle switch
- Linen cupboard under the mezzanine



EASY CLEAN SHOWER ROOM

- Direct access from every room
- Marble-effect basin on grey lacquered metal unit, topped with an XXL round mirror
- Surface-mounted light fitting
- Wall-mounted storage column
- Open-top shower, 100x80 cm with extra-flat tray and high glass door
- His & Hers adjustable shower column
- Window with frosted privacy glass

TERRACE

- Wood railing
- Triple sliding window and fixed window (bar window optional)



IDEAL OPTIONS

- Window and bar top
- 2 high in & out stools
- French window in living room instead of fixed bay window
- Hair dryer

Data not contractually binding. The manufacturer reserves the right to modify its products at any time without notice. Decorative items, microwaves and televisions are not supplied with mobile homes.