

804 2-BED



Model shown with optional 4-sided Bois Blond printed cladding, installed vertically

2 Bedrooms

Sleeps 4

29.90 m² surface area

Dimensions: 8.05x4.45 m*

2.30 m internal height

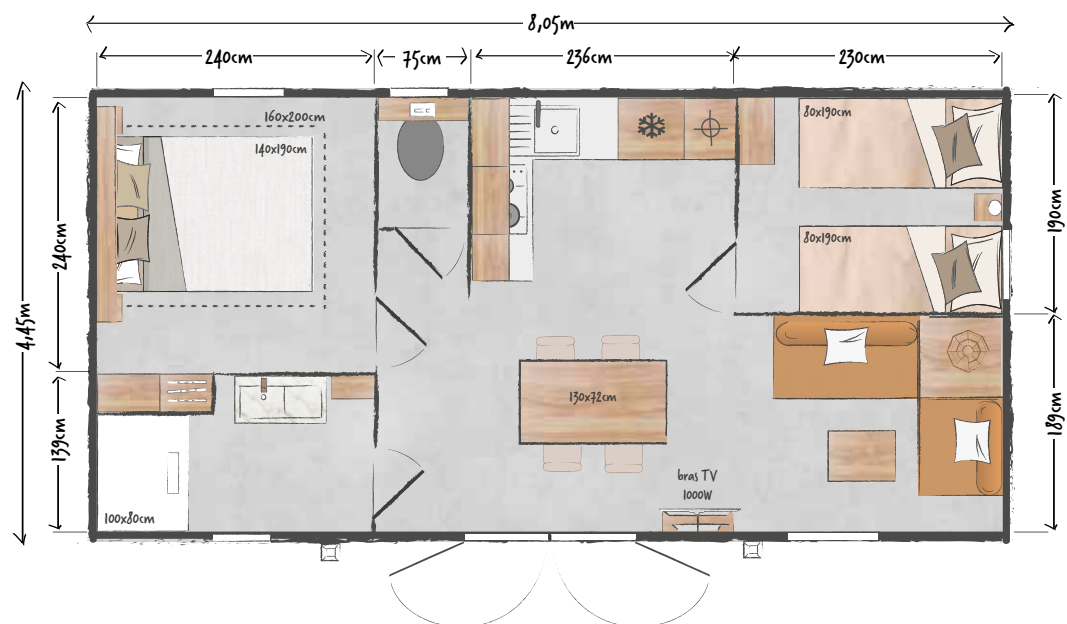
3.59 m external height

BOLD

The 804 2-bed's layout is unrivalled in terms of comfort and movement space.

Its key feature is a lounge opening onto nature – the ideal place to sit and think. This room can be converted into a 3rd bedroom with the optional curtain divider and extra bed.

* Overall dimensions and floor area inside walls.



model 804 2-bed



Optional French window

STANDARD EQUIPMENT

- Round metallic gutter and downspout kit
- 1000 W convection heater
- TV cabling
- Top and bottom ventilation
- Hydropower boiler
- Main circuit breaker
- HR35 kg/m³ foam mattress, OEKO TEX-certified
- Smoke detector with 10-year guarantee
- Free-standing kitchen units with PVC skirting boards
- Phthalate-free heavy-duty lino
- Fridge freezer
- 100% LED lighting
- Top-of-the-range ACS-certified taps, C3 cartridge mixers with central cold position and 7 l/min flow limiter (sink and basin)
- Reinforced floor (100 mm) and roof (200 mm) insulation - GR40 glass wool
- Wall-mounted toilet

KITCHEN

- Large capacity tall storage units
- Recessed hood
- Resin sink with stylish mixer tap
- White 4-burner gas hob
- Base units with wooden handles
- Drawer with full-extension runners
- Technical column housing the boiler
- Fridge-freezer column

LIVING ROOM

- 130x72 cm rectangular table with 4 stackable in & out chairs
- Corner sofa on legs with integrated coffee table
- Pendant light
- Power socket with USB port
- Coffee table
- TV bracket and shelf underneath
- Fixed bay (French window optional)

MASTER BEDROOM

- Full-width blackout curtain
- Headboard with shelves, reading lights and integrated sockets
- Bedside tables
- 140x190 cm bed base, 18 slats
- Built-in, full-height wardrobe with sliding door

CHILDREN'S/GUEST ROOM

- Headboard
- Fabric roller blind
- Wall-mounted storage column with integrated container
- 80x190 cm bed bases, 18 slats
- Bedside table
- Reading light



IDEAL OPTIONS

- Opening bay window
- Mezzanine bedroom
- Curtain divider
- Towel dryer in the shower room
- Hand-washing basin



Data not contractually binding. The manufacturer reserves the right to modify its products at any time without notice. Decorative items, microwaves and televisions are not supplied with mobile homes.

EASY CLEAN SHOWER ROOM

- Marble-effect basin on grey lacquered metal unit, topped with an XXL round mirror
- Surface-mounted light fitting
- Wall-mounted storage column with towel rail
- Open-top shower, 100x80 cm with extra-flat tray and high glass door
- His & Hers adjustable shower column
- Window with frosted privacy glass