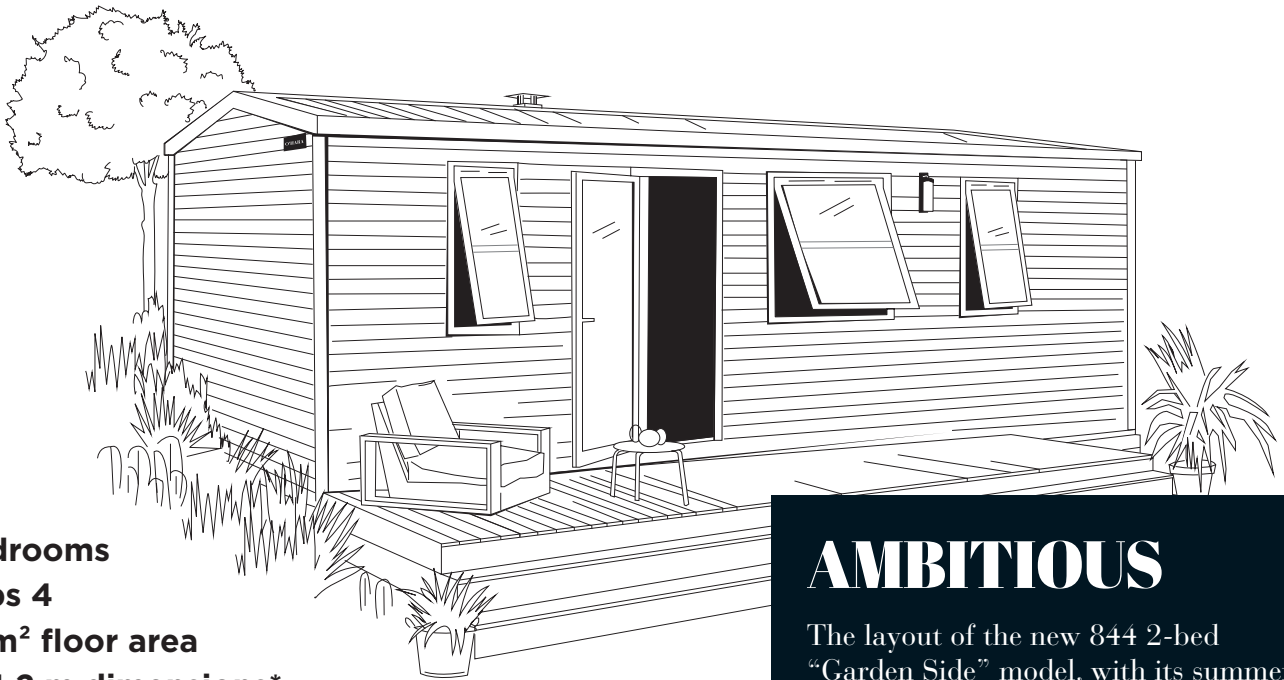


model

# 844 2-bed Garden Side

# O'HARA



**2 Bedrooms**

**Sleeps 4**

**31.6 m<sup>2</sup> floor area**

**8.6x4.2 m dimensions\***

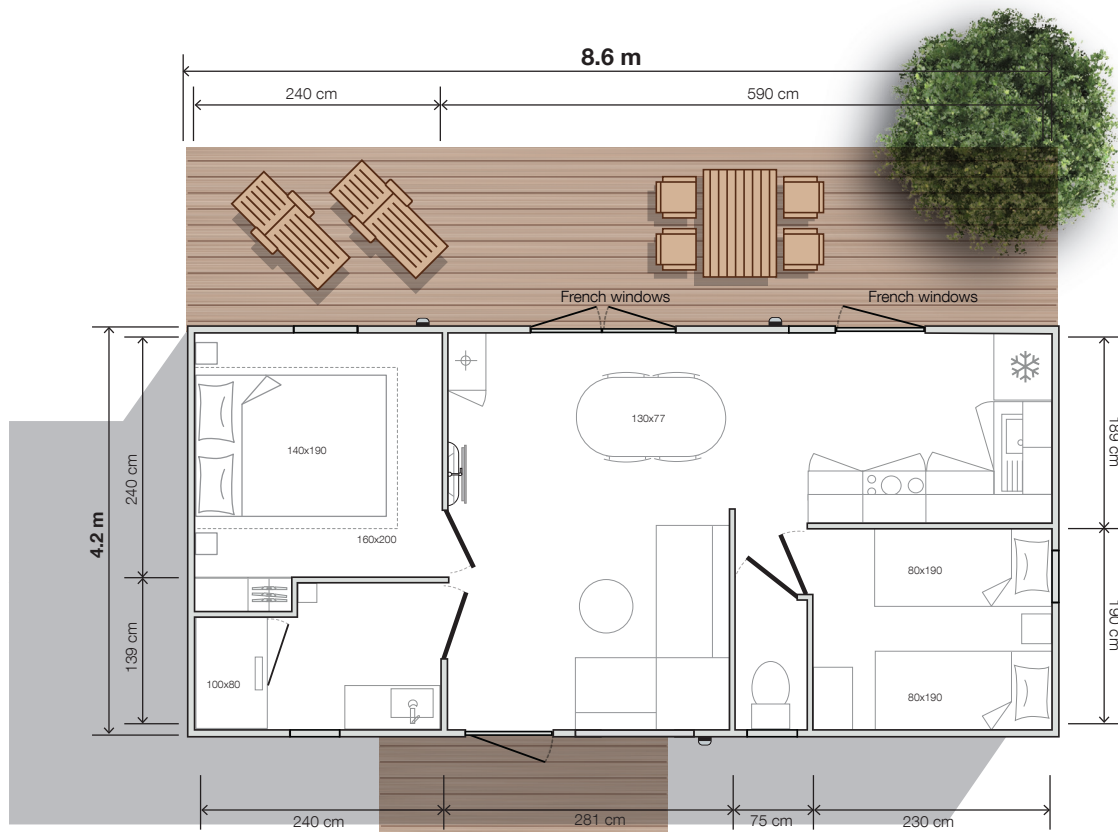
**2.3 m interior height**

**3.52 m exterior height**

## AMBITIOUS

The layout of the new 844 2-bed "Garden Side" model, with its summer kitchen opening on to the rear terrace of the mobile home, and its EASY CLEAN bathroom equipped with a 100x80 cm shower, offers a high standard of living! This model is an invitation to reflect on life in the privacy found at the rear of the mobile home.

\*Overall dimensions and usable interior floor area.



model  
**8442-bed**  
Garden Side



## Standard equipment

- 1,000 Watt intelligent electronic convector with digital display
- TV cabling
- High and low vents
- Hydropower boiler
- Central circuit breaker
- HR35 kg/m<sup>3</sup> OEKO TEX-certified foam mattress
- Smoke detector with 10-year warranty
- Kitchen units with feet and PVC plinths
- Heavy duty, phthalate-free linoleum
- 207 L fridge-freezer
- 100% LED lighting
- Resin sink
- Top-of-the-range, ACS-certified plumbing fixtures with 7 L/min flow reducers
- Environmental awareness sticker

## Kitchen

- Large capacity, tall storage units
- Base units with handles
- Built-in cooker hood
- Fridge-freezer/microwave unit
- Drawers with full-extension slides
- Lacquered metal shelf

## Living room/lounge

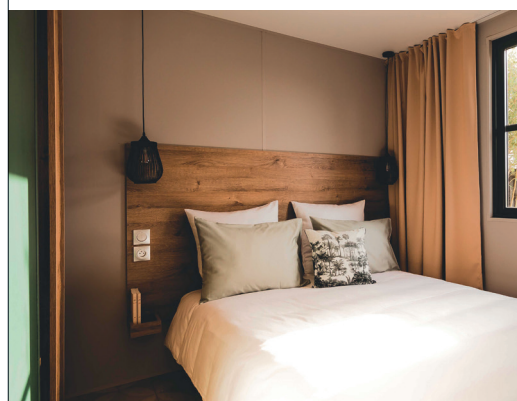
- 130x77 cm oval table with 4 chairs
- Sofa with feet
- Pendant light
- Power socket with USB port
- TV mount and shelf below
- Coffee table
- Boiler cupboard

## Master bedroom

- Full-width blackout curtain
- Headboard with built-in bedside tables and sockets
- Pendant lights on both sides of the bed
- 140x190 cm bed base, 18 slats
- Built-in, full-height wardrobe with sliding door

## Children's bedroom

- Fabric roller blind
- Storage unit with built-in tray
- 80x190 cm bed bases, 18 slats
- Bedside table and reading light



## Easy Clean bathroom

- Vanity unit with XL round mirror
- Wall-mounted light
- Wall-mounted storage cabinet
- 100x80 cm shower with extra-flat tray and tall glass door
- Adjustable shower riser rail
- Window with frosted glass
- Hairdryer



## Ultimate options

- 160x200 cm bed
- Full-length mirror in the master bedroom
- Mezzanine bedroom
- Smart music speaker

*Data not contractually binding. The manufacturer reserves the right to modify its products at any time without notice. Decorative items, microwaves and televisions are not supplied with mobile homes.*