

# 844 2-BED

garden side



Model shown with 4-sided Wild Muscade cladding option, installed vertically

**2 Bedrooms**

**Sleeps 4**

**31.60 m<sup>2</sup> surface area**

**Dimensions: 8.50x4.45 m\***

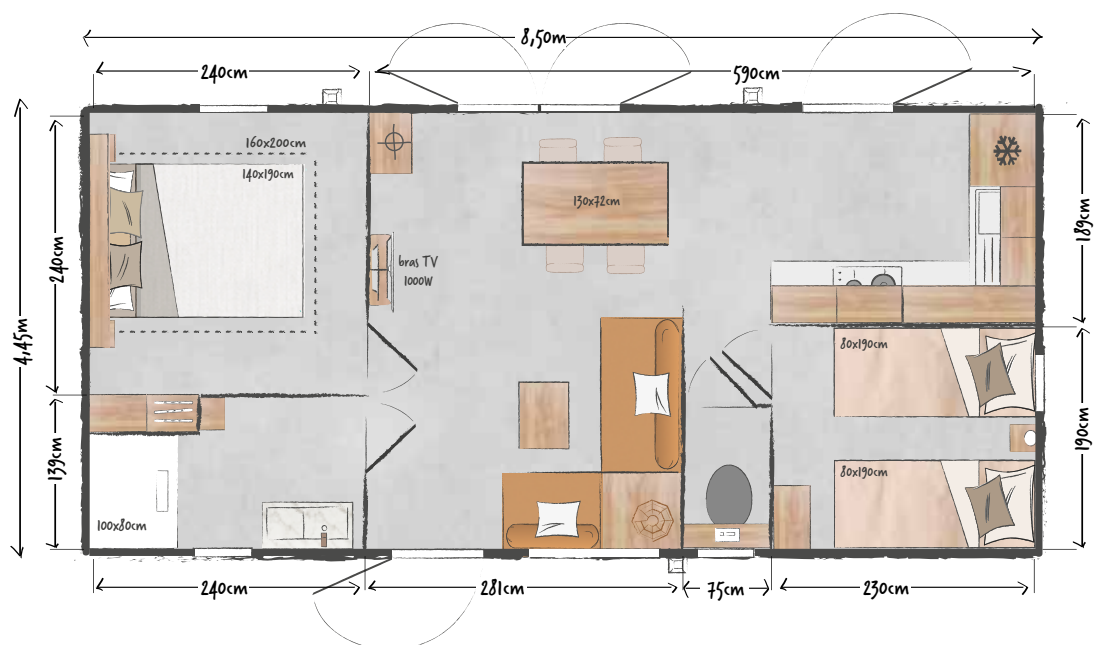
**2.30 m internal height**

**3.59 m external height**

\* Overall dimensions and floor area inside walls.

## AMBITIOUS

The layout of the 844 2-bed "Garden Side" model, with its summer kitchen opening onto the mobile home's rear terrace and its EASY CLEAN shower room equipped with a 100x80 cm shower, is heavily inspired by high-end living! This model is an invitation to take a new approach to life in a cosy, intimate mobile home.



model - garden side  
**844 2-bed**



### STANDARD EQUIPMENT

- Round metallic gutter and downspout kit
- 1000 W convection heater
- TV cabling
- Top and bottom ventilation
- Hydropower boiler
- Main circuit breaker
- HR35 kg/m<sup>3</sup> foam mattress, OEKO TEX-certified
- Smoke detector with 10-year guarantee
- Free-standing kitchen units with PVC skirting boards
- Phthalate-free heavy-duty lino
- Fridge freezer
- 100% LED lighting
- Top-of-the-range ACS-certified taps, C3 cartridge mixers with central cold position and 7 l/min flow limiter (sink and basin)
- Reinforced floor (100 mm) and roof (200 mm) insulation - GR40 glass wool
- Wall-mounted toilet



### IDEAL OPTIONS

- 160x200 cm bed
- Full-length mirror in the master bedroom
- Mezzanine bedroom
- Hair dryer

### KITCHEN

- Large capacity tall storage units
- Recessed hood
- Resin sink with stylish mixer tap
- White 4-burner gas hob
- Base units with wooden handles
- Drawer with full-extension runners
- Fridge-freezer column

### LIVING ROOM

- 130x72 cm rectangular table with 4 stackable in & out chairs
- Corner sofa on legs with integrated coffee table
- Pendant light
- Power socket with USB port
- Coffee table
- TV bracket and shelf underneath
- Technical column housing the boiler



*Data not contractually binding. The manufacturer reserves the right to modify its products at any time without notice. Decorative items, microwaves and televisions are not supplied with mobile homes.*

### MASTER BEDROOM

- Full-width blackout curtain
- Headboard with shelves, reading lights and integrated sockets
- Bedside tables
- 140x190 cm bed base, 18 slats
- Built-in, full-height wardrobe with sliding door

### CHILDREN'S/GUEST ROOM

- Headboard
- Fabric roller blind
- Wall-mounted storage column with integrated container
- 80x190 cm bed bases, 18 slats
- Bedside table
- Reading light



### EASY CLEAN SHOWER ROOM

- Marble-effect basin on grey lacquered metal unit, topped with an XXL round mirror
- Surface-mounted light fitting
- Wall-mounted storage column
- Open-top shower, 100x80 cm with extra-flat tray and high glass door
- His & Hers adjustable shower column
- Window with frosted privacy glass