

944 3-BED



Model shown with optional 4-sided light Landes pine printed cladding, installed vertically

3 Bedrooms

Sleeps 6

35.30 m² surface area

Dimensions: 9.45x4.45 m*

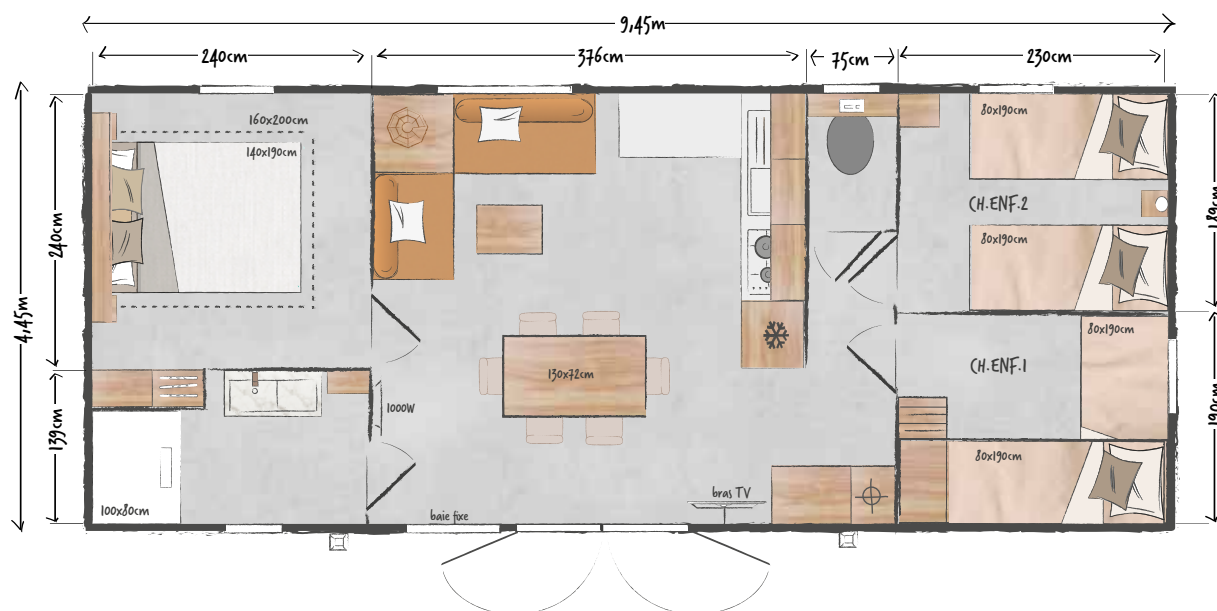
2.30 m internal height

3.59 m external height

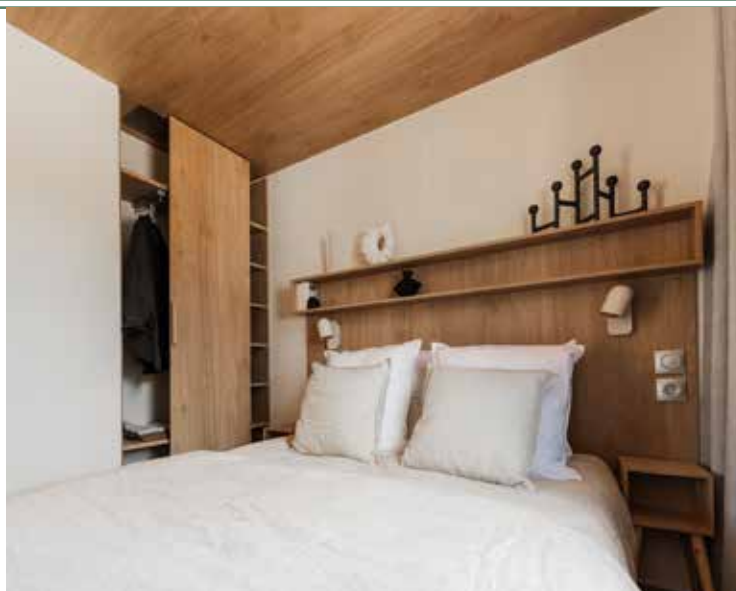
SPACIOUS

A 3-bedroom model with top-of-the-range volume, the 944 3-bed offers 3 very distinct living areas: a modular living room with its stylish table, a cosy lounge and an ultra-equipped kitchen to delight young and old alike!

* Overall dimensions and floor area inside walls.



model 944 3-BED



MASTER BEDROOM

- Full-width blackout curtain
- Headboard with shelves, reading lights and integrated sockets
- Bedside tables
- 140x190 cm bed base, 18 slats
- Built-in, full-height wardrobe with sliding door

CHILDREN'S/GUEST ROOM

- Headboard
- Fabric roller blind
- Wall-mounted storage column with integrated container
- 80x190 cm bed bases, 18 slats
- Bedside table
- Reading light



MEZZANINE BEDROOM

- Fabric roller blind
- 80x190 cm bottom bed with reading light, socket and bedside cabinet
- 80x190 cm top bed accessible via a ladder
- Ceiling-mounted spotlighting controlled by toggle switch
- Linen cupboard under the mezzanine

EASY CLEAN SHOWER ROOM

- Marble-effect basin on grey lacquered metal unit, topped with an XXL round mirror
- Surface-mounted light fitting
- Wall-mounted storage column
- Open-top shower, 100x80 cm with extra-flat tray and high glass door
- His & Hers adjustable shower column
- Window with frosted privacy glass

KITCHEN

- Large capacity tall storage units
- Recessed hood
- Resin sink with stylish mixer tap
- White 4-burner gas hob
- Base units with wooden handles
- Drawer with full-extension runners
- Fridge-freezer/microwave unit

LIVING ROOM

- 130x72 cm rectangular table with 6 stackable in & out chairs
- Corner sofa on legs with integrated coffee table
- Pendant light
- Power socket with USB port
- Coffee table
- TV bracket
- Technical column housing the boiler
- Large storage cupboard with washing machine option



Data not contractually binding. The manufacturer reserves the right to modify its products at any time without notice. Decorative items, microwaves and televisions are not supplied with mobile homes.

STANDARD EQUIPMENT

- Round metallic gutter and downspout kit
- 1000 W convection heater
- TV cabling
- Top and bottom ventilation
- Hydropower boiler
- Main circuit breaker
- HR35 kg/m³ foam mattress, OEKO TEX-certified
- Smoke detector with 10-year guarantee
- Free-standing kitchen units with PVC skirting boards
- Phthalate-free heavy-duty lino
- Fridge freezer
- 100% LED lighting
- Top-of-the-range ACS-certified taps, C3 cartridge mixers with central cold position and 7 l/min flow limiter (sink and basin)
- Reinforced floor (100 mm) and roof (200 mm) insulation - GR40 glass wool
- Wall-mounted toilet



IDEAL OPTIONS

- High transverse bed in the rear children's bedroom
- Full-length mirror in the master bedroom
- Hair dryer