

model
LIVING 2-bed

O'HARA

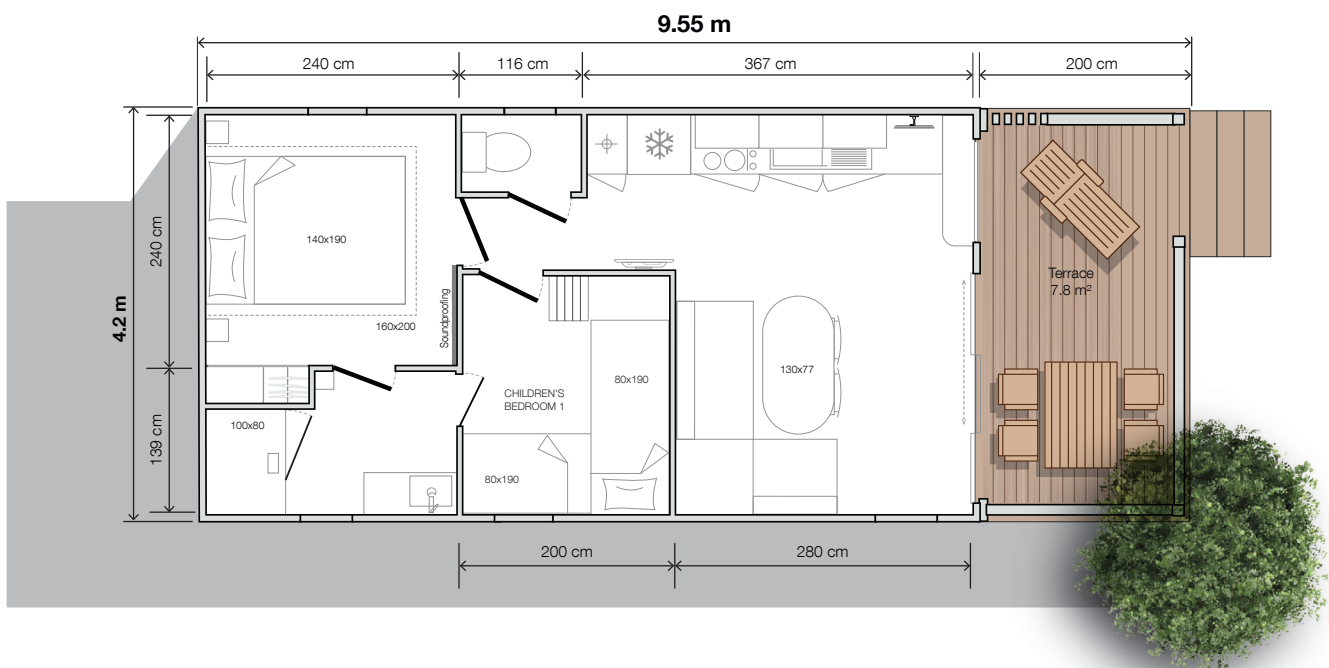


- 2 Bedrooms**
- Sleeps 4**
- 28 m² floor area**
- + 7.8 m² integrated terrace**
- 9.55x4.2 m dimensions***
- 2.3 m interior height**
- 3.52 m exterior height**

WITH A VIEW!

The sleeping area has an original layout with direct access to the bathroom from each bedroom. The "LIVING" can be used as a bar area for sharing precious moments with friends. The discreet exterior design elegantly fits into your Premium areas with a view!

*Overall dimensions and usable interior floor area.



model
LIVING 2-bed



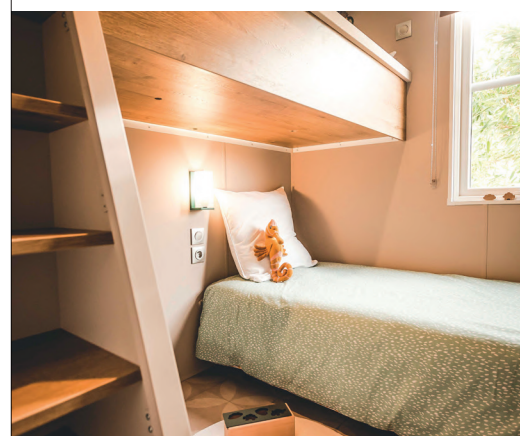
O'HARA

Master bedroom

- Full-width blackout curtain
- Headboard with built-in bedside tables and sockets
- Pendant lights on both sides of the bed
- Built-in, full-height wardrobe with sliding door
- Soundproofing between the master bedroom and the children's bedroom

Mezzanine bedroom

- Fabric roller blind
- Lower bed 80x190 cm with reading light, socket and bedside table
- Upper bed 80x190 cm, accessible by staircase
- Mezzanine bed lit by ceiling spotlights controlled by a two-way switch
- Wardrobe under the mezzanine



Standard equipment

- 1,000 Watt intelligent electronic convector with digital display
- TV cabling
- High and low vents
- Hydropower boiler
- Central circuit breaker
- HR35 kg/m³ OEKO TEX-certified foam mattress
- Smoke detector with 10-year warranty
- Kitchen units with feet and PVC plinths
- Heavy duty, phthalate-free linoleum
- 207 L fridge-freezer
- 100% LED lighting
- Resin sink
- Top-of-the-range, ACS-certified plumbing fixtures with 7 L/min flow reducers
- Environmental awareness sticker

Kitchen

- Indoor bar area
- Large capacity, tall storage units
- Resin sink with stylish mixer tap
- Base unit with handles and 2 shelf units.
- Lacquered metal shelf
- Built-in cooker hood
- Fridge-freezer/microwave unit
- Drawers with full extension slides
- TV mount

Living room/lounge

- 130x77 cm oval table with 2 chairs
- Sofa with feet
- Pendant light
- Power socket with USB port
- Venetian blind on fixed window
- Large mirror above the sofa



Easy Clean bathroom

- Direct access from each bedroom
- Vanity unit with XL round mirror
- Wall-mounted light
- Wall-mounted storage cabinet
- 100x80 cm shower with extra-flat tray and tall glass door
- Adjustable shower riser rail
- Hairdryer
- Window with frosted glass

Terrace

- Wood & metal guard rail for a modern design
- Triple sliding patio door and fixed window (optional bar window)

Ultimate options

- Window and bar shelf
- 2 in & out high stools
- French windows in the living room in place of fixed window
- Smart music speaker

Data not contractually binding. The manufacturer reserves the right to modify its products at any time without notice. Decorative items, microwaves and televisions are not supplied with mobile homes.

