

865 2-BED



Model shown with 4-sided Wild Châtaigne cladding option, installed vertically

2 Bedrooms

Sleeps 4

33.20 m² surface area

Dimensions: 8.65x4.45 m*

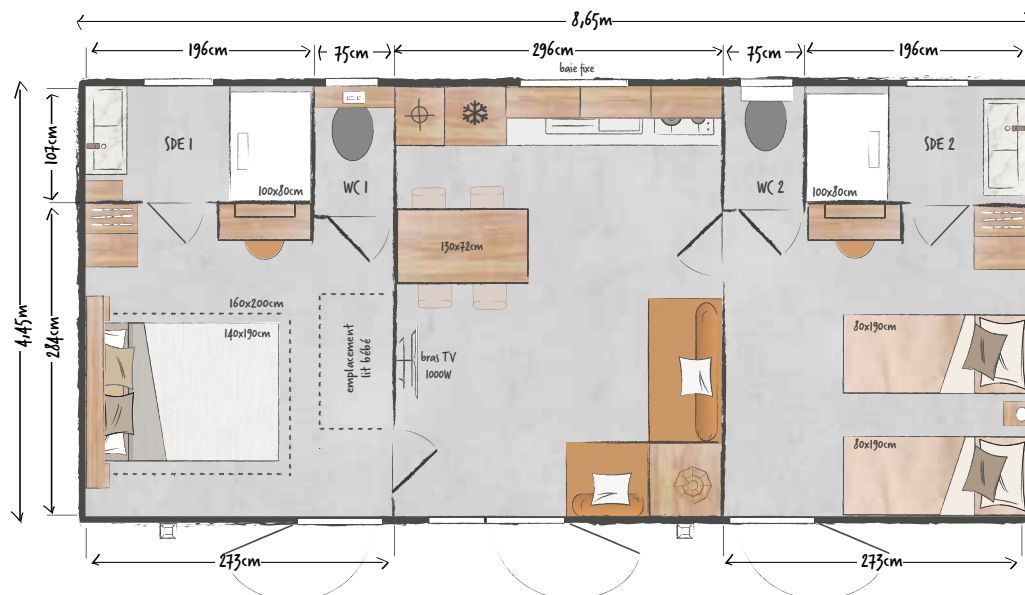
2.30 m internal height

3.59 m external height

MODULAR

This ultra-comfortable 2-bedroom, 2-bathroom model boasts an ultra-bright open-plan kitchen thanks to its horizontal bay window! An ideal model for families, it can also be split into two completely independent suites with the 'hotel pack' option.

* Overall dimensions and floor area inside walls.



model 865 2-bed



STANDARD EQUIPMENT

- Round metallic gutter and downspout kit
- 1000 W convection heater
- TV cabling
- Top and bottom ventilation
- Hydropower boiler
- Main circuit breaker
- HR35 kg/m³ foam mattress, OEKO TEX-certified
- Smoke detector with 10-year guarantee
- Free-standing kitchen units with PVC skirting boards
- Phthalate-free heavy-duty lino
- Fridge freezer
- 100% LED lighting
- Top-of-the-range ACS-certified taps, C3 cartridge mixers with central cold position and 7 l/min flow limiter (sink and basin)
- Reinforced floor (100 mm) and roof (200 mm) insulation - GR40 glass wool
- Wall-hung toilet in master suite

KITCHEN

- Large capacity tall storage units
- Recessed hood
- Resin sink with stylish mixer tap
- White 4-burner gas hob
- Base units with wooden handles
- Drawer with full-extension runners
- Fridge-freezer column
- Technical column housing the boiler

LIVING ROOM

- 130x72 cm rectangular table with 4 stackable in & out chairs
- Corner sofa on legs with integrated coffee table
- Pendant light
- Power socket with USB port
- TV bracket



Data not contractually binding. The manufacturer reserves the right to modify its products at any time without notice. Decorative items, microwaves and televisions are not supplied with mobile homes.

MASTER BEDROOM

- Full-width blackout curtain
- Headboard with shelves, reading lights and integrated sockets
- Bedside tables
- Large cupboard with hanging rail
- Dressing table/desk with socket, mirror and seat
- 140x190 cm bed base, 18 slats
- Private shower room with separate wall-hung toilet
- Cot space

CHILDREN'S/GUEST ROOM

- French window with a curtain
- Headboard
- 80x190 cm bed bases, 18 slats
- Bedside table and reading light
- Large cupboard with hanging rail
- Dressing table/desk with socket, mirror and seat
- Private shower room
- Separate toilet



Optional coffee table

EASY CLEAN SHOWER ROOMS

- Marble-effect basin on grey lacquered metal unit, topped with an XXL round mirror
- Open-top shower, 100x80 cm with extra-flat tray and high glass door
- Wall-mounted storage column and wall-mounted light fitting in the master bedroom
- His and Hers shower column in the master suite
- Adjustable shower rail in the children's/guest shower room
- Window with frosted privacy glass
- Venetian blind



IDEAL OPTIONS

- Hotel pack
- Towel dryers in bathrooms
- TV bracket and full-length mirror in the master bedroom
- Wall-hung toilet in children's/guests' bathroom